

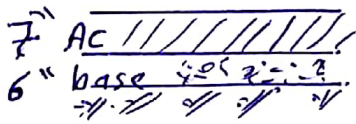
د. پ. در. ت. پ. ل. پ.

المادة: سوار وانشاد لفریه

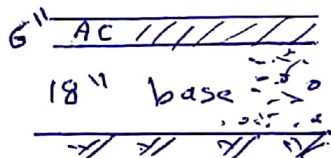
اجایه سوار بفریه:

Single Axle			Tandem Axle			Triple Axle		
-	-	Eq. x No.	-	-	Eq. x No.	-	-	Eq. x No.
300	0.041	12.3	60	0.009	0.54	50	0.032	1.6
-	-	129	-	-	10.35	-	-	5.1
-	-	433.5	-	-	26.61	-	-	10.93
-	-	408	-	-	24.3	-	-	18.7
-	-	432	-	-	211.2	-	-	38.8
Total		1414.8			273			75.1

Truck Factor $T_F = \frac{1762.8}{408} = \boxed{4.407}$



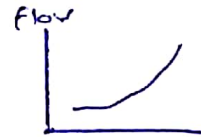
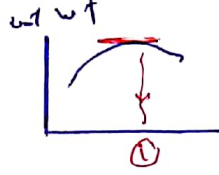
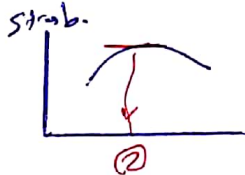
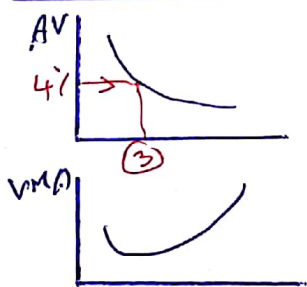
Cross Sec. (2)



Cross Sec. (1)

اجایه سوار بفریه:

بیمه با %
لکه بهینه = لاست
درجه = ارباب
منزل از قبل



اجایه سوار بفریه:

$\frac{1+2+3}{3} = \text{opt. bit \%}$

% AC = 5.2 %

O.K.

check

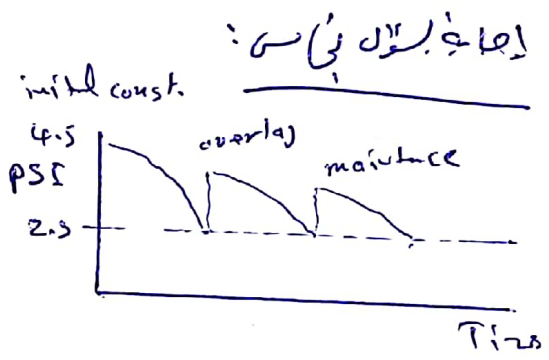
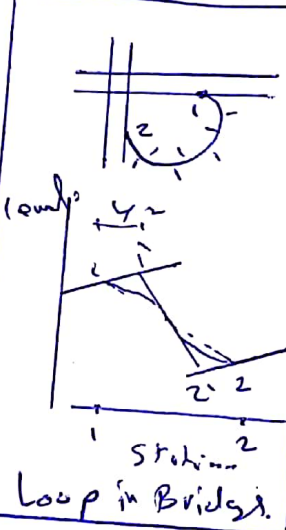
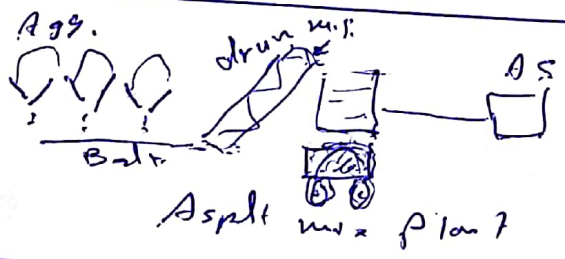
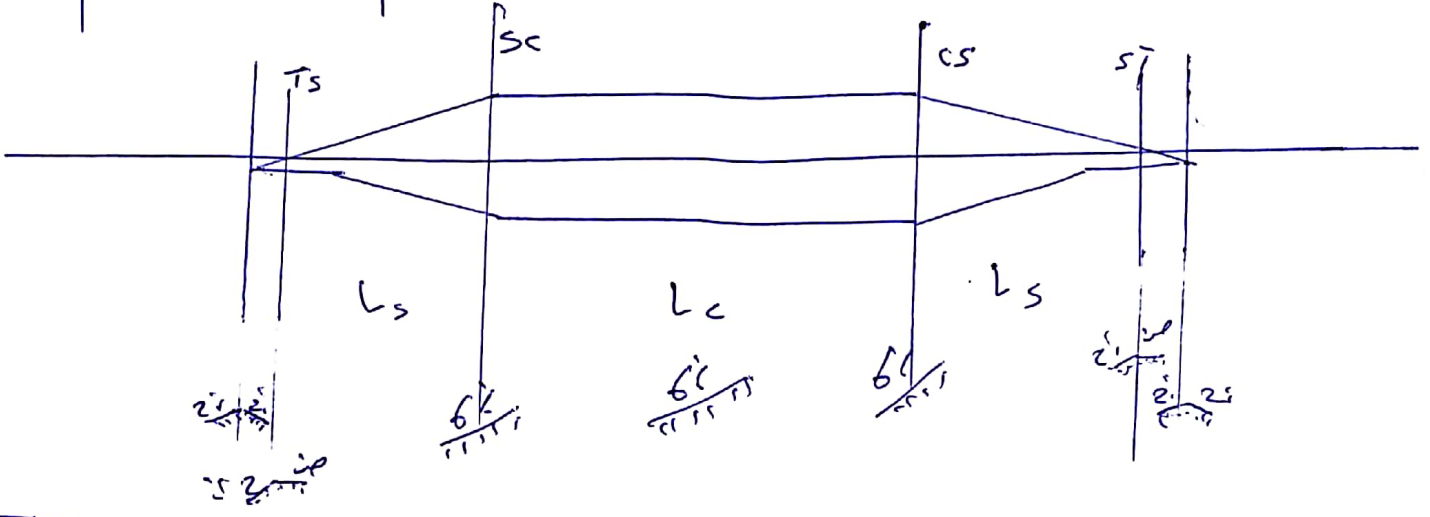
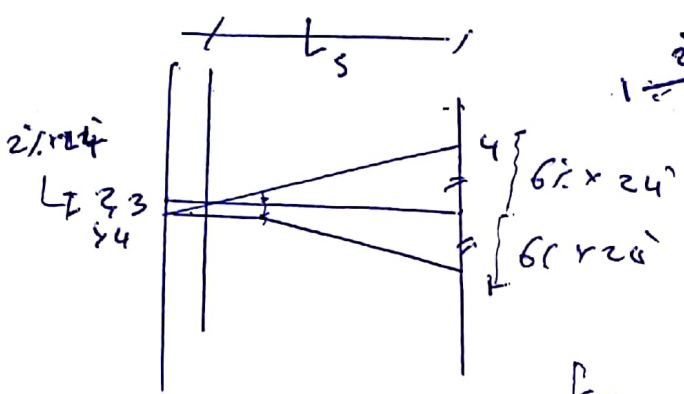
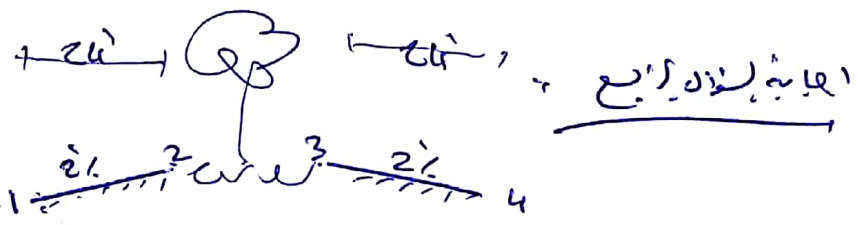
Flow = 8 : 16

AV = 3 : 5

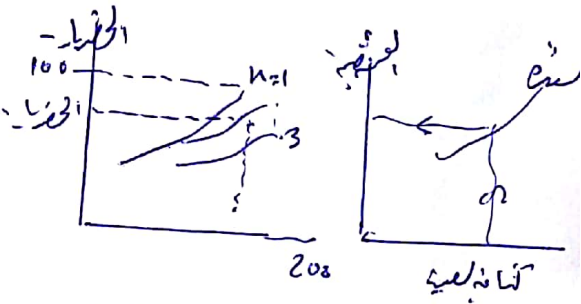
VMA = 13 - 14

st-b = 2 - 7 to 16.

2-2



$PCI = 100 - \dots$



PCI	0-10	100
ساز	ساز	ساز

حقوق و امتیازات - حق چاپ
 حق چاپ و توزیع
 حق چاپ و توزیع

حق چاپ و توزیع - حق چاپ - حق چاپ - حق چاپ
 حق چاپ و توزیع
 حق چاپ و توزیع